



LOW-NO CHILL

LOW CHILL
(Evergreen)

NO CHILL

EFFICIENT



EFFICIENT

HARVEST EFFICIENCY

MID



EARLY

FRUIT SEASON

21-28 DAYS



21-28 DAYS

FRUIT STORAGE

MID SEASON
ALTERNATIVE



EARLY SEASON
ALTERNATIVE

MARKET POSITION

18-21 mm



16-18 mm

FRUIT SIZE

SWEET & ACID



SWEET & ACID

FRUIT FLAVOR

FIRM



FIRM

FRUIT FIRMNESS

LIGHT BLUE



LIGHT BLUE

FRUIT COLOR

JupiterBlue® 'FCM12-131'

JupiterBlue® 'FCM12-131' is one of the earliest ripening varieties from the Fall Creek® Collection in no chill production regions. The berries are medium-sized and slightly flat, with a firm, meaty texture, and a lightly acidic flavor.

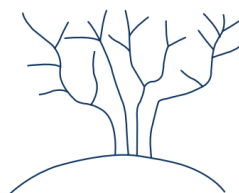
This variety fruits primarily from primocane buds under no chill conditions and floricanes in low chill regions. Although self-fertile, cross-pollination is highly recommended to ensure maximum fruit size and will reduce the percentage of retained corollas. JupiterBlue® 'FCM12-131' has a competitive yield of highly attractive berries during the early marketing window. Caution must be taken to properly manage JupiterBlue® 'FCM12-131' as it is sensitive to fungal and bacterial diseases and poor nutrient management.

RIPENING	J	F	M	A	M	J	J	A	S	O	N	D
MEXICO												
PERU												
SPAIN												
S. AFRICA												

■ LOW CHILL (Evergreen)

■ NO CHILL

PLANT SHAPE



ROUND

VARIETY
VIDEO



<https://youtu.be/4aPxhVJHexl>

JupiterBlue® 'FCM12-131' is licensed to Fall Creek. The variety information presented in this chart is based on observations and does not guarantee results. Plant performance, fruit quality, and production across global regions, will vary due to a variety of elements including climate, soil, horticultural practices, inherent traits, and other factors. Fall Creek recommends growers trial varieties in their own commercial grower operations.