



AzraBlue® 'FCM14-031'

AzraBlue® 'FCM14-031' is an early variety with concentrated fruit production. In zero chill growing regions, there is strong potential for high yields during fall production. The fruit is firm, mildly aromatic, and maintains quality during long-term storage. Visitors have consistently rated the fruit quality as superior to other leading varieties.

Trials are still in progress to determine the commercial viability of AzraBlue® 'FCM14-031' in low-chill production systems.

LOW CHILL
(Evergreen)

NO CHILL

EFFICIENT



AVERAGE

HARVEST EFFICIENCY

TRIALS IN PROGRESS



EARLY

FRUIT SEASON

35-42 DAYS



21-28 DAYS

FRUIT STORAGE

TRIALS IN PROGRESS



JUPITERBLUE
ALTERNATIVE

MARKET POSITION

21-24 mm



21-24 mm

FRUIT SIZE

SWEET & ACID



SWEET & ACID

FRUIT FLAVOR

FIRM



FIRM

FRUIT FIRMNESS

LIGHT BLUE



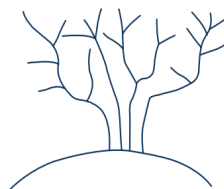
MEDIUM BLUE

FRUIT COLOR

RIPENING	J	F	M	A	M	J	J	A	S	O	N	D
MEXICO												
PERU												
SPAIN												
S. AFRICA												

■ LOW CHILL (Evergreen) ■ NO CHILL

PLANT SHAPE



LOW CHILL (Evergreen)
& NO CHILL
ROUND

VARIETY VIDEO



<https://youtu.be/nUAFydb3HZM>

AzraBlue® 'FCM14-031' is licensed to Fall Creek. The variety information presented in this chart is based on observations and does not guarantee results. Plant performance, fruit quality, and production across global regions, will vary due to a variety of elements including climate, soil, horticultural practices, inherent traits, and other factors. Fall Creek recommends growers trial varieties in their own commercial grower operations.